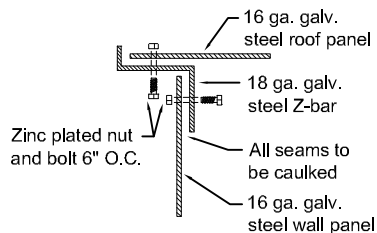
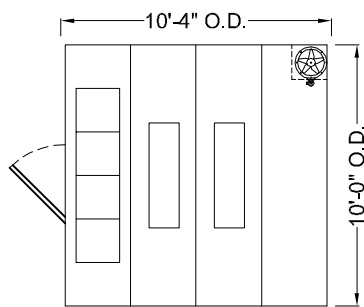




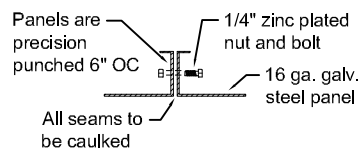
- Man door 6" off floor for spill containment



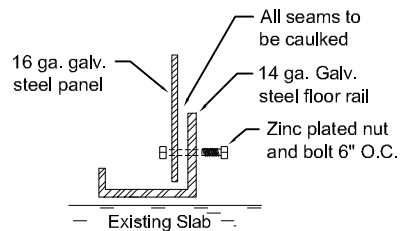
Z-BAR TO WALL AND ROOF DETAIL



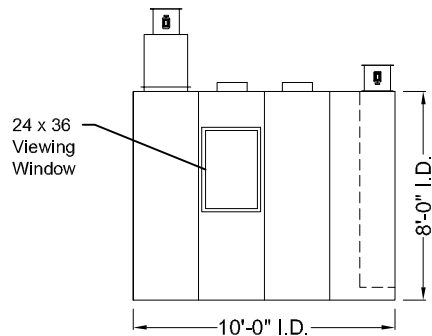
TOP VIEW



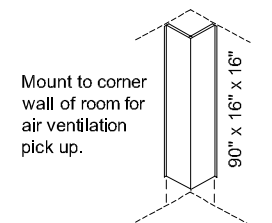
PANEL TO PANEL DETAIL



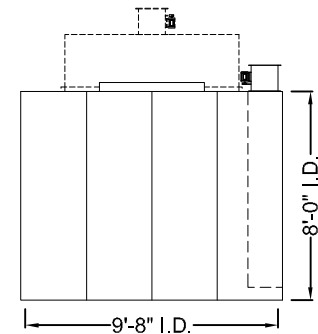
PANEL TO FLOOR RAIL DETAIL



SIDE VIEW



RACEWAY DETAIL

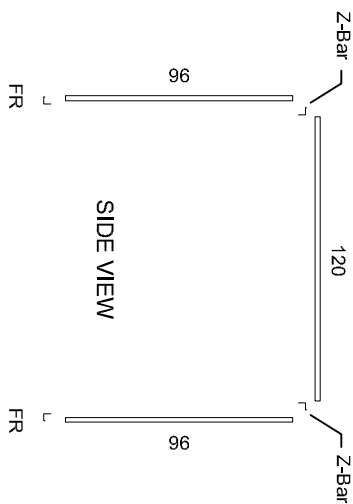
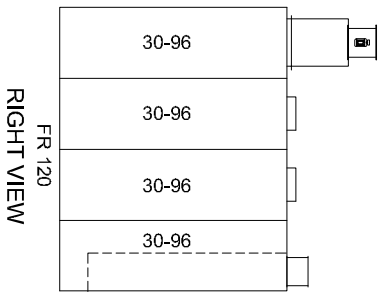
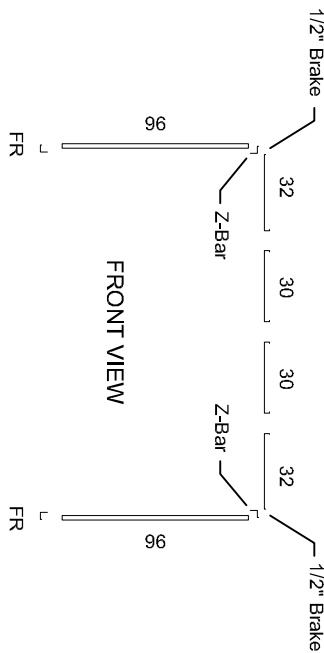
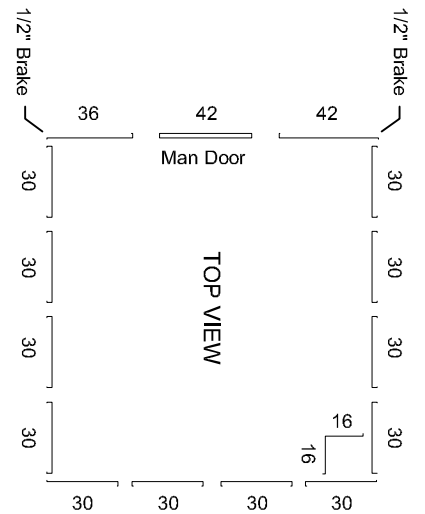
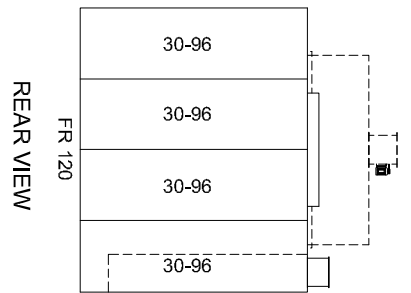


REAR VIEW

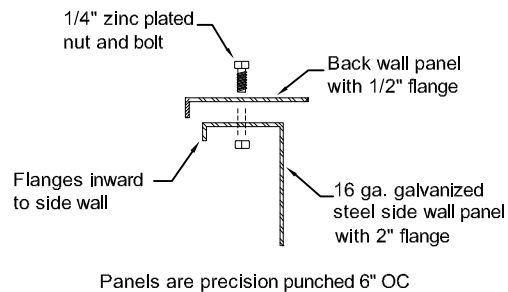
Lights - LDPI LED fixtures with electronic driver, mounted on 3/16" tempered safety glass. 120-277 V. (Qty. 2)

CUSTOMER: JAYS CONSTRUCTION GROUP

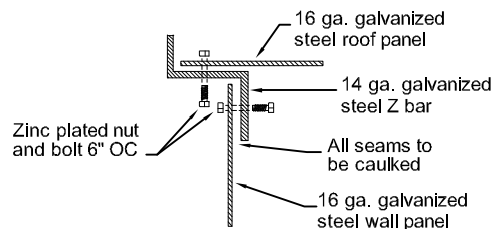
1	SHEET	DRAWN BY:	POWDER COATED		<div></div> <div>Automotive, Truck & Industrial Spray Booths 10110 Greentleaf Ave. Santa Fe Springs, Ca 90670 (562) 941-5313</div>	REV	DATE	DESCRIPTION
			MIXING ROOM SL-MR-10108					
			BOOTH IS MANUFACTURED IN ACCORDANCE WITH THE FOLLOWING CODES AND GUIDELINES: NFPA 33, NEC 5.16, UFC 15 AND OSHA GUIDELINES.					
			SCALE:					
			DATE:					
APPROVED BY:								



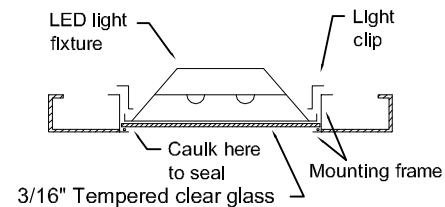
2 SHEET	DRAWN BY:	MIXING ROOM SL-MR-10108	SCALE:		REV	DATE	DESCRIPTION
		BOOTH IS MANUFACTURED IN ACCORDANCE WITH THE FOLLOWING CODES AND GUIDELINES: NFPA 33, NEC 516, UFC 15 AND OSHA GUIDELINES.	DATE:				
			APPROVED BY:				
			Automotive, Truck & Industrial Spray Booths 10110 Greenleaf Ave. Santa Fe Springs, Ca 90670 (562) 941-5313				



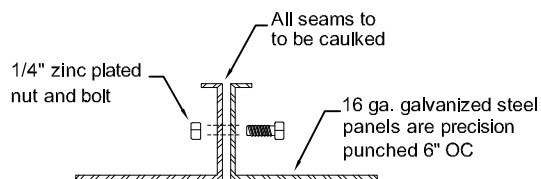
BACK PANEL TO SIDE PANEL DETAIL



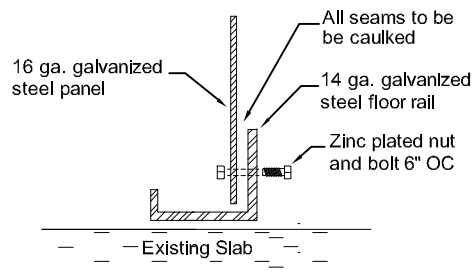
Z BAR TO WALL AND ROOF DETAIL



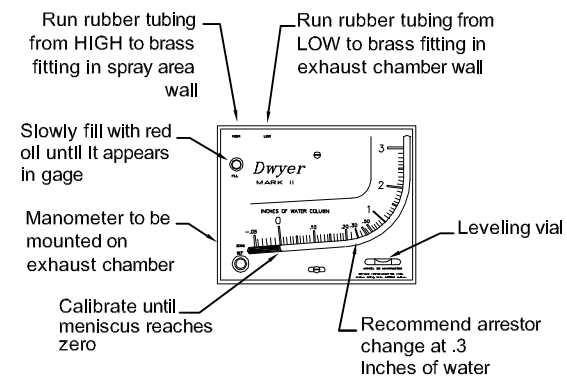
LDPI LED LIGHT DETAIL



PANEL TO PANEL DETAIL

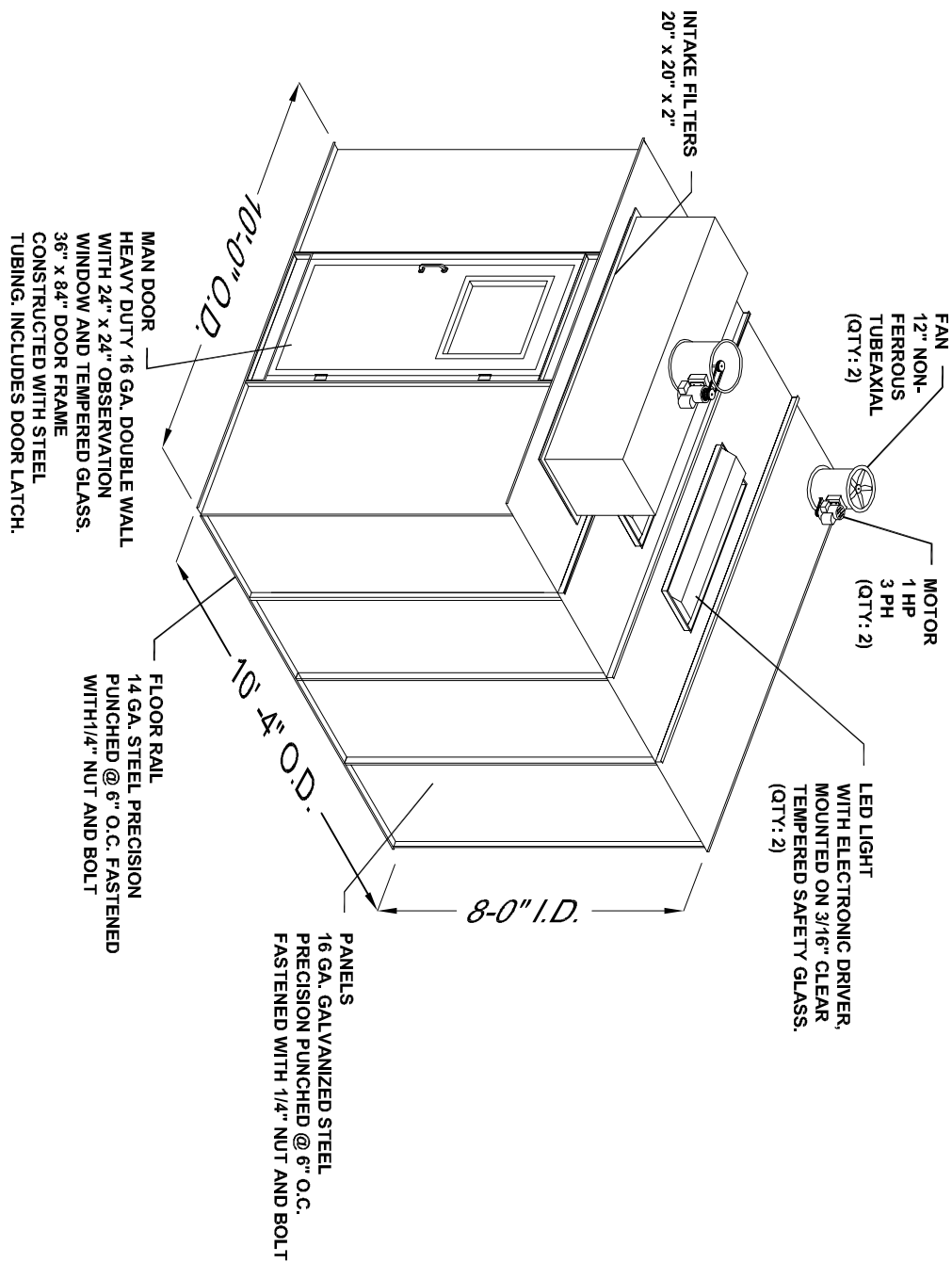


PANEL TO FLOOR RAIL DETAIL



MANOMETER DETAIL

<div>DETAILS</div>		SCALE:	<div><p>SPRAYLINE Manufacturing</p></div> <div>Automotive, Truck & Industrial Spray Booths 10110 Greenleaf Ave. Santa Fe Springs, Ca 90670 (562) 941-5313</div>	REV	DATE	DESCRIPTION
		DATE:				
		APPROVED BY:				
DRAWN BY:						
SHEET						
3						



REV	DATE	DESCRIPTION



Automotive, Truck & Industrial Spray Booths
10110 Greenleaf Ave. Santa Fe Springs, Ca 90670 (562) 941-5313

MIXING ROOM
SL-MR-10108

DRAWN BY:

SHEET

4