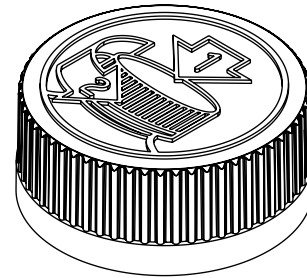


SECTION A-A



STATIC TORQUE RECOMMENDATION: 15-25 in-lbs
REQUIREMENT MAY VARY DEPENDING UPON CONTAINER MATERIAL,
NECK FINISH, AND CAPPING EQUIPMENT

DIMENSIONS ENCLOSED IN () INDICATE REFERENCE DIMENSIONS
AND NO TOLERANCE LIMITS ARE ESTABLISHED

DIMENSIONS PRECEDED BY AN *** INDICATE THE DIMENSION IS
PROCESS SENSITIVE. PROCESS SENSITIVE DIMENSIONS ARE
VERIFIED TO BE WITHIN THE TOLERANCE LIMITS DURING THE
PRODUCTION RUN. ALL REMAINING DIMENSIONS ARE VERIFIED AT
PRODUCTION VALIDATION.

PROPRIETARY AND CONFIDENTIAL

THIS DRAWING IS PROTECTED BY COPYRIGHT AND CONTAINS
INFORMATION PROPRIETARY TO MOLD-RITE PLASTICS AND ITS
SUBSIDIARIES. ANY REPRODUCTION, DISCLOSURE, OR USE OF
ITS CONTENTS OR ANY PART THEREOF IS EXPRESSLY
PROHIBITED EXCEPT AS MOLD-RITE PLASTICS AND ITS
SUBSIDIARIES OTHERWISE MAY AGREE IN WRITING.

THIS MASTER DOCUMENT IS CONTROLLED ELECTRONICALLY.
PRINTED OR DOWNLOADED COPIES ARE UNCONTROLLED.
DOCUMENT USERS ARE RESPONSIBLE FOR ENSURING THEY HAVE
THE LATEST REVISION PRIOR TO USE.

THE PART DIMENSIONS DEPICTED ARE THOSE WHICH HAVE GENERALLY BEEN FOUND TO BE FUNCTIONAL BASED ON INDUSTRY EXPERIENCE.
BECAUSE OF VARIABILITY IN CONTAINER FINISHES, EACH CLOSURE/FINISH SYSTEM SHOULD BE INDIVIDUALLY EVALUATED AND TESTED TO
ENSURE IT MEETS APPLICABLE PERFORMANCE CRITERIA.

MOLD-RITE PLASTICS AND ITS SUBSIDIARIES RESERVE THE RIGHT TO REVISE ANY OR ALL SPECIFICATIONS AND REQUIREMENTS.

REFERENCE

DIMENSION

TOLERANCE

UNITS

Ø E

1.182 [30.02]

± 0.015 [0.38]

in [mm]

Ø T'

1.276 [32.41]

± 0.015 [0.38]

in [mm]

H (SEATED)

0.519 [13.18]

REFERENCE

in [mm]

H (INNER)

0.390 [9.91]

± 0.010 [0.25]

in [mm]

OD

1.545 [39.24]

± 0.020 [0.51]

in [mm]

OAH

0.667 [16.94]

± 0.016 [0.41]

in [mm]

PART WEIGHT

5.9

± 1.4

g

THREAD DETAIL
INFORMATION:

6 THREADS
PER INCH

0.167" [4.24] PITCH

380°

FULL DEPTH
THREADS

DRAWN BY: BDG

5/13/2016

ENG APPR: BDG

7/6/2017

QA APPR: REL

9/20/2017



DRAWING TITLE:

33-400 CRC Assm
PICTO

MATERIAL:

POLYPROPYLENE

DRAWING TYPE: CUSTOMER

DISTRIBUTION CODE: D

REPLACES DRAWINGS:

C-8018

MODEL NUMBER: PM 10139 33-400 CRC PDT Assembly

DWG SIZE: 8.5" x 11"

DRAWING NUMBER:

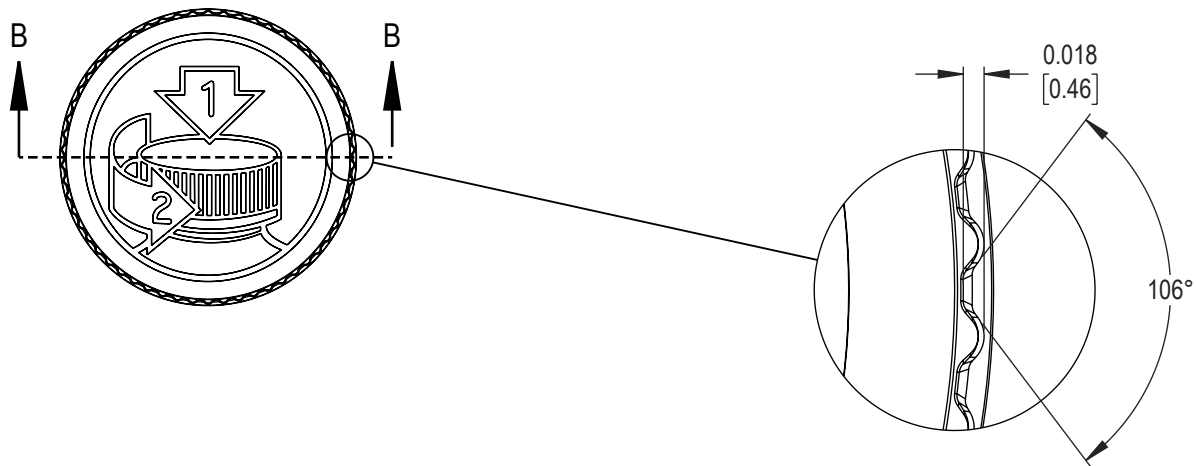
REVISION:

SCALE: 1:1 & NOTED

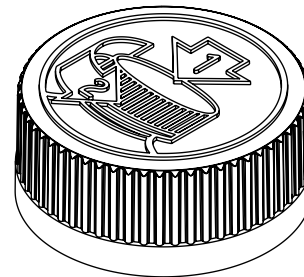
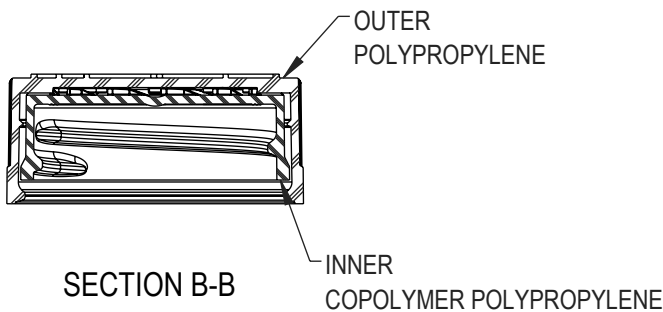
SHEET: 1 OF 3

CQA-10257

00.AC



SCALE 6 : 1
(58) EQUISPACED RIBS



DIMENSIONS ENCLOSED IN () INDICATE
REFERENCE DIMENSIONS AND NO
TOLERANCE LIMITS ARE ESTABLISHED

PROPRIETARY AND CONFIDENTIAL

THIS DRAWING IS PROTECTED BY
COPYRIGHT AND CONTAINS INFORMATION
PROPRIETARY TO MOLD-RITE PLASTICS
AND ITS SUBSIDIARIES. ANY
REPRODUCTION, DISCLOSURE, OR USE
OF ITS CONTENTS OR ANY PART
THEREOF IS EXPRESSLY PROHIBITED
EXCEPT AS MOLD-RITE PLASTICS AND ITS
SUBSIDIARIES OTHERWISE MAY AGREE IN
WRITING

THE PART DIMENSIONS DEPICTED ARE
THOSE WHICH HAVE GENERALLY BEEN
FOUND TO BE FUNCTIONAL BASED ON
INDUSTRY EXPERIENCE
BECAUSE OF VARIABILITY IN CONTAINER
FINISHES, EACH CLOSURE/FINISH
SYSTEM SHOULD BE INDIVIDUALLY
EVALUATED AND TESTED TO
ENSURE IT MEETS APPLICABLE
PERFORMANCE CRITERIA.

MOLD-RITE PLASTICS AND ITS
SUBSIDIARIES RESERVE THE RIGHT TO
REVISE ANY OR ALL SPECIFICATIONS
AND REQUIREMENTS.

06/08/2023	00	AC	UPDATE DRAWING FORMAT AND MRP LOGO	LES	LES
07/06/2017	00	AB	UPDATED DRAWING FORMAT. H (SEATED) REFERENCE UPDATED TO 0.519	BDG	BDG
05/13/2016	00	AA	DRAWING RELEASED	BDG	BDG
DATE	REV	N/P	DESCRIPTION	ENG	DRW

REVISION HISTORY

REVISIONS: REV: A PHYSICAL CHANGE TO THE PART IMPACTING FIT, FORM OR FUNCTION
N/P: DRAWING OR SPECIFICATION CHANGE ONLY

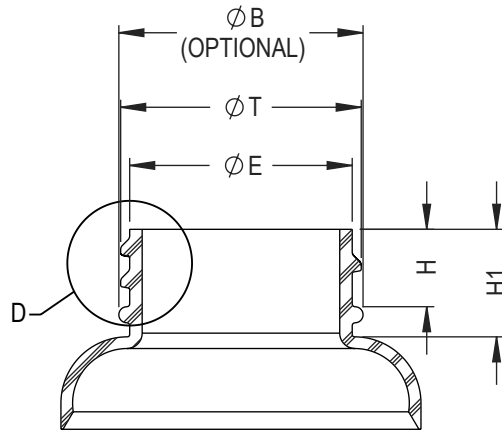
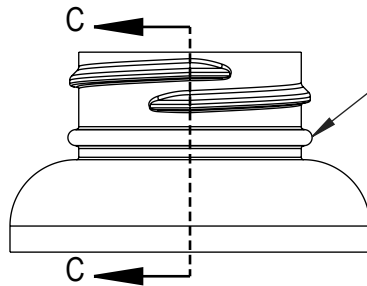
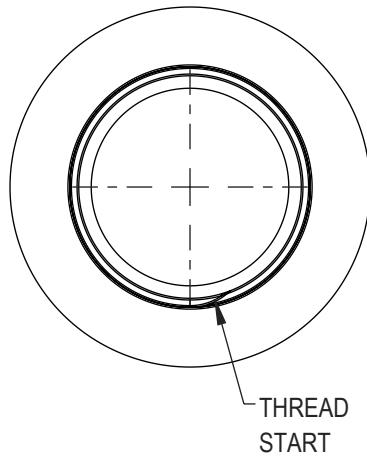


DRAWING TITLE:

33-400 CRC ASSM
PCTO

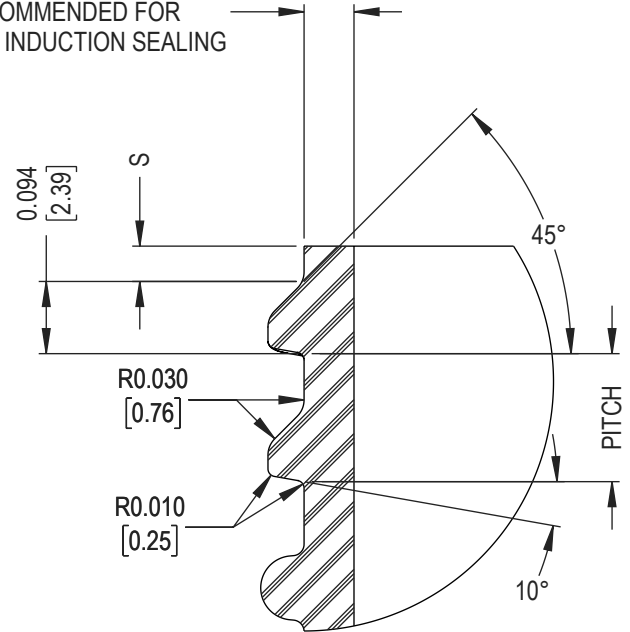
THIS MASTER DOCUMENT IS CONTROLLED ELECTRONICALLY.
PRINTED OR DOWNLOADED COPIES ARE UNCONTROLLED.
DOCUMENT USERS ARE RESPONSIBLE FOR ENSURING THEY
HAVE THE LATEST REVISION PRIOR TO USE.

DRAWING TYPE: CUSTOMER		DISTRIBUTION CODE: D	
DWG SIZE: 8.5" x 11"		DRAWING NUMBER:	REVISION:
SCALE: 1:1 & NOTED	SHEET: 2 OF 3	CQA-10257	00.AC



SECTION C-C

0.050 [1.27] MINIMUM FLAT
RECOMMENDED FOR
PROPER INDUCTION SEALING



DETAIL D
THREAD DETAIL
SCALE 4 : 1

CHILD RESISTANT PROTOCOL TESTING NOTE: MOLD-RITE PLASTIC, LLC CERTIFIES THAT ITS CHILD RESISTANT CLOSURES PASSED TEST OUTLINED IN 16 CFR SECTION 1700.0 TESTING PROCEDURE AND MEET WITH REQUIREMENTS DEFINED BY 16 CFR SECTION 1700.15 POISON PREVENTION PACKAGING STANDARDS, GENERALLY. IT IS RECOMMENDED THAT CUSTOMERS CONDUCT TESTING TO CONFIRM CLOSURES PERFORM AS EXPECTED WITH THEIR SPECIFIC CONTAINERS AND CONDITIONS OF USE.

RECOMMENDED NECK FINISH IS DETERMINED FOR PROPER FUNCTIONAL PERFORMANCE WITH MOLD-RITE CLOSURE. USE OF MOLD-RITE CLOSURE WITH CONTAINER NOT MATCHING RECOMMENDED NECK FINISH SHOULD BE TESTED AND CONFIRMED FOR APPLICATION BY THE USER.

NOMINAL ORIENTATION OF CLOSURE (IF INDICATED) IS BASED ON NOMINAL DIMENSIONS OF BOTH CLOSURE AND RECOMMENDED NECK FINISH. FOR EXACT ORIENTATION, EACH CONTAINER SHOULD BE EVALUATED ON A CASE BY CASE BASIS.

DIMENSIONS ENCLOSED IN () INDICATE REFERENCE DIMENSIONS AND NO TOLERANCE LIMITS ARE ESTABLISHED

PROPRIETARY AND CONFIDENTIAL
THIS DRAWING IS PROTECTED BY COPYRIGHT AND CONTAINS INFORMATION PROPRIETARY TO MOLD-RITE PLASTICS AND ITS SUBSIDIARIES. ANY REPRODUCTION, DISCLOSURE, OR USE OF ITS CONTENTS OR ANY PART THEREOF IS EXPRESSLY PROHIBITED EXCEPT AS MOLD-RITE PLASTICS AND ITS SUBSIDIARIES OTHERWISE MAY AGREE IN WRITING

THE PART DIMENSIONS DEPICTED ARE THOSE WHICH HAVE GENERALLY BEEN FOUND TO BE FUNCTIONAL BASED ON INDUSTRY EXPERIENCE. BECAUSE OF VARIABILITY IN CONTAINER FINISHES, EACH CLOSURE/FINISH SYSTEM SHOULD BE INDIVIDUALLY EVALUATED AND TESTED TO ENSURE IT MEETS APPLICABLE PERFORMANCE CRITERIA.

MOLD-RITE PLASTICS AND ITS SUBSIDIARIES RESERVE THE RIGHT TO REVISE ANY OR ALL SPECIFICATIONS AND REQUIREMENTS.

NECK FINISH DIMENSIONS ASSUME ZERO THICKNESS (NO) LINER

REFERENCE	DIMENSION	TOLERANCE	UNITS
Ø E	1.159 [29.43]	± 0.008 [0.20]	in [mm]
Ø T	1.253 [31.82]	± 0.008 [0.20]	in [mm]
S	0.046 [1.17]	± 0.015 [0.38]	in [mm]
H	0.550 [13.97]	MINIMUM	in [mm]
H1	0.405 [10.29]	MINIMUM	in [mm]
Ø B	1.330 [33.78]	MAXIMUM	in [mm]
THREADS PER INCH	6		
PITCH	0.167 [3.18]		in [mm]



DRAWING TITLE:

33-400 CRC ASSM
RECOMMENDED NECK FINISH

THIS MASTER DOCUMENT IS CONTROLLED ELECTRONICALLY. PRINTED OR DOWNLOADED COPIES ARE UNCONTROLLED. DOCUMENT USERS ARE RESPONSIBLE FOR ENSURING THEY HAVE THE LATEST REVISION PRIOR TO USE.

DRAWING TYPE: CUSTOMER	DISTRIBUTION CODE: D
DWG SIZE: 8.5" x 11"	DRAWING NUMBER: CQA-10257
SCALE: 1:1 & NOTED	SHEET: 3 OF 3
	REVISION: 00.AC